

Use template, red arrow placed in corner of pallet. x3 10mm drill holes, x4 13mm drill holes. **All marked on template**, along with positioning for x2 150mm timber beams for container and hopper.



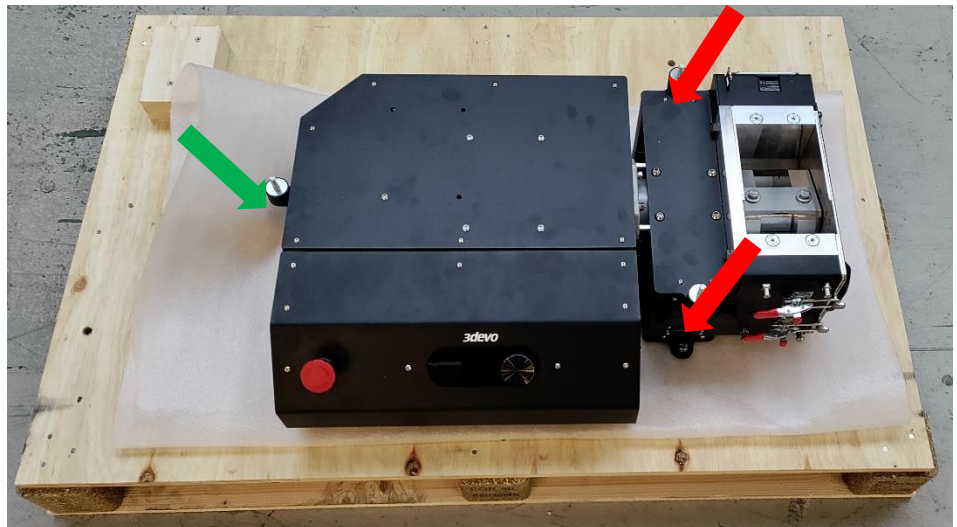
Hammer impact nuts into reverse side of pallet (10mm holes).



Use 3 layers of thin foam between pallet and hybrid machine.



Place granulator and bolt x3 M8x25mm hex head bolts and M8 washers into pre placed impact nuts. **Note:** due to inconsistencies in assembly it is easiest to bolt the **red** arrows first.

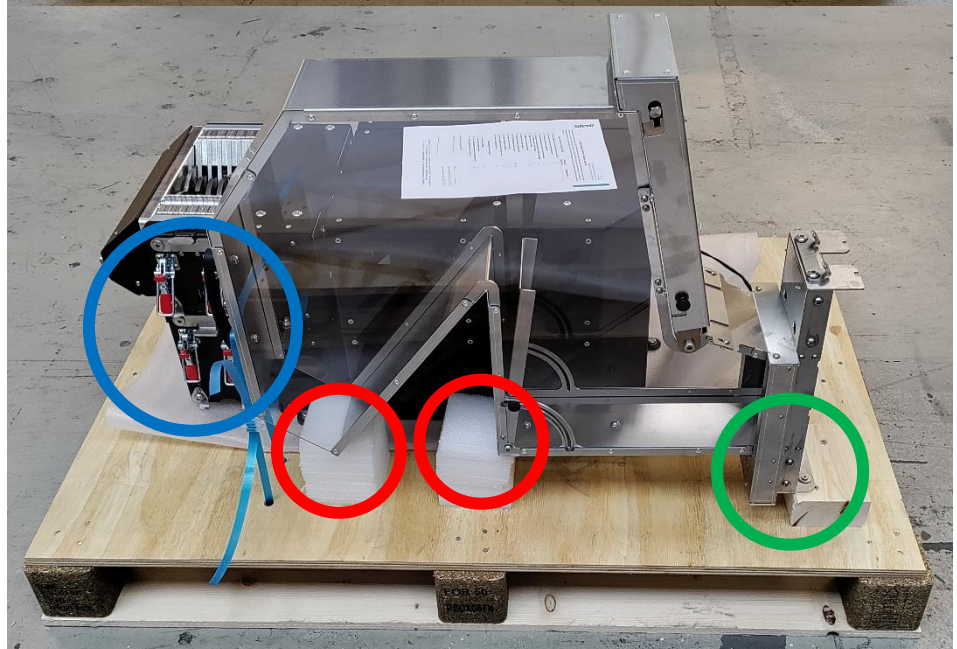


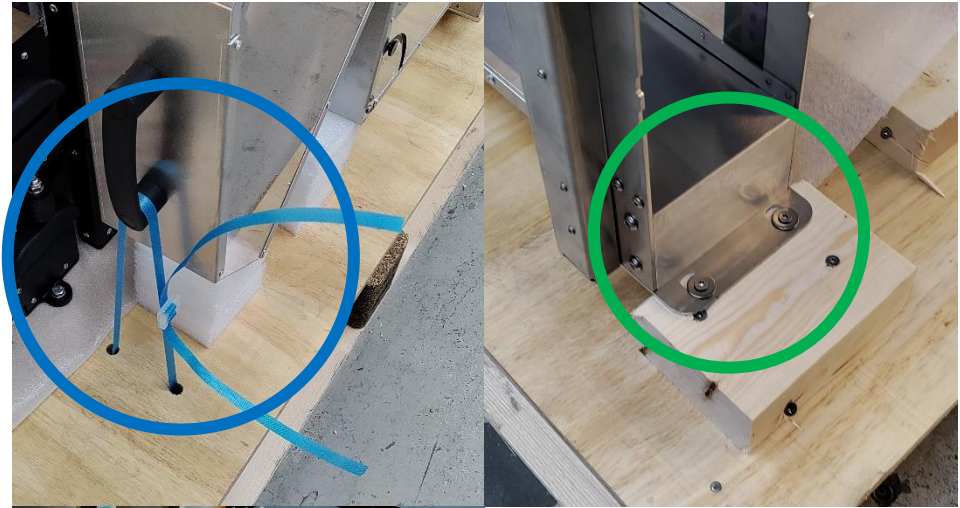
Place shredder and bolt in place using x3 M8 lock nuts and washers.



Place hopper as follows:

- 2.5 foam blocks for support.
- Strapping around handle and pre-drilled holes.
- x2 wood screws and washers.





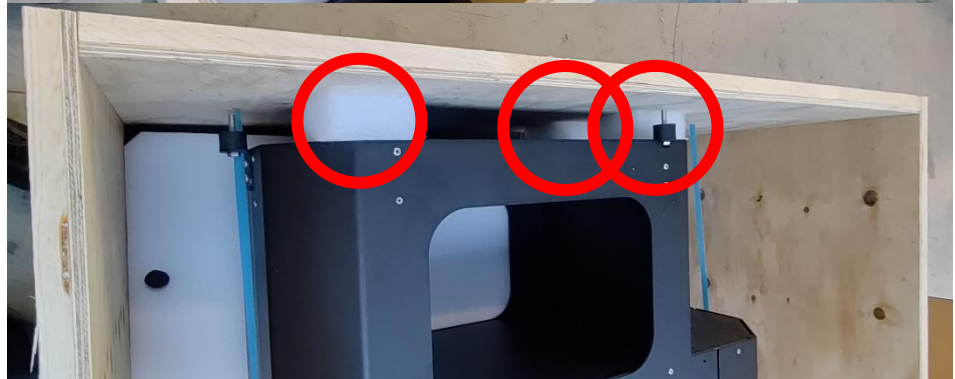
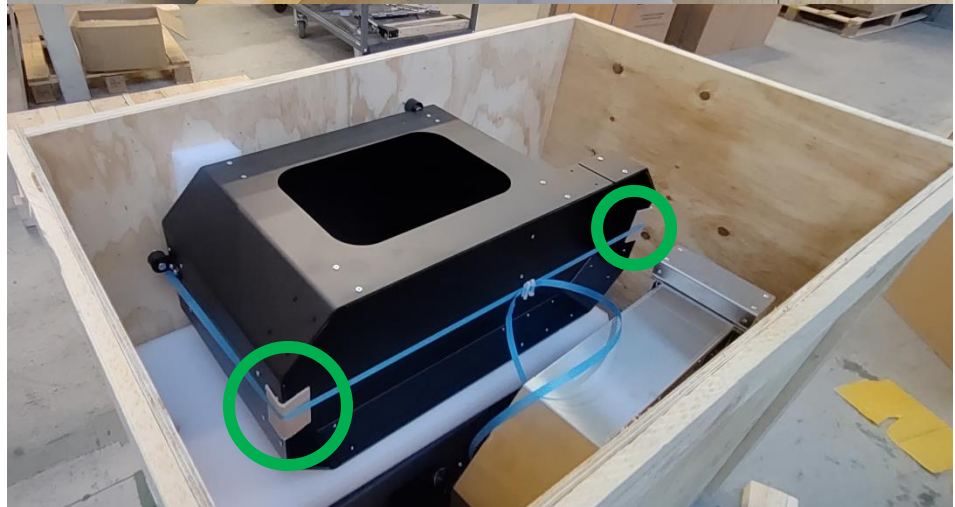
As above with container:

- Strapping around handle and pre-drilled holes.
- x2 wood screws and washers.



Place foam between trolley and hybrid machine, and strap trolley to wall of crate. **Note: trolley wheels must be removed.** x2 13mm holes must be pre-drilled in the wall of the crate for the strapping.

- Foam blocks.
- Cardboard corner pieces to protect from strapping.



Final step is to screw beam into wall of crate to prevent movement of trolley vertically.

- Foam blocks.

