

Regular Cleaning Procedure

GP20 Hybrid

Introduction

The maintenance and cleaning of the GP20 Hybrid is crucial to avoid material cross contamination or any performance issues that could arise from dirt, material build-up, or blockages. This document details the steps needed to carry out a regular cleaning procedure. This can be done directly after processing a material or as part of a regular maintenance procedure.

Common tools

These tools are not provided by 3devo, but are required to perform maintenance tasks and part replacements. They can easily be sourced locally.

- 8 Allen key
- Clean brush
- Vacuum (with thin nozzle attachment)
- Microfiber cloth (optional)
- Pressurized air (optional)

Safety Equipment

Safety equipment, brief description

- Cut proof gloves
- Safety goggles
- earplugs while shredder is on

GP20 Hybrid Cleaning

Safety

- Carry out procedure with two persons!
- Hazards of cuts! Use necessary tools and protective equipment.

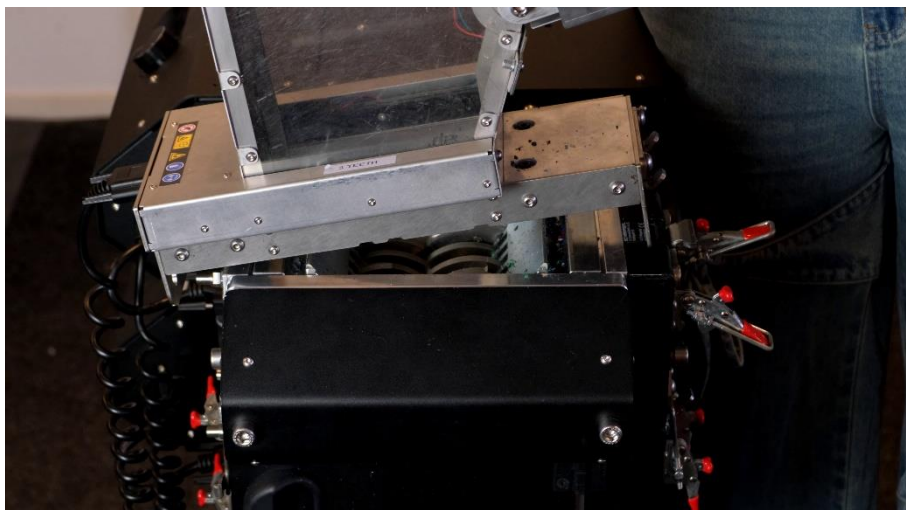
Step by step procedure

Preparation

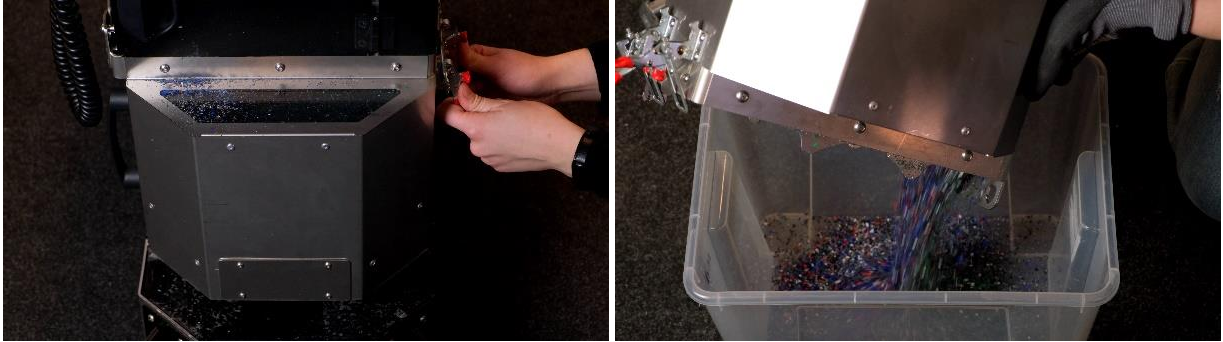
1. Shut off the machine manually through the display menu.
2. Turn off the machine with the power button on the back.



3. Unplug 2 power cables, one for each module.
4. Ensure there is plenty of space around the container and hopper end of the machine.
5. Lock 2 front castor wheels that have brakes on them.
6. Disconnect hopper cable and rest the cable safely out of the way.
7. Unlock and remove the hopper, place safely on side.



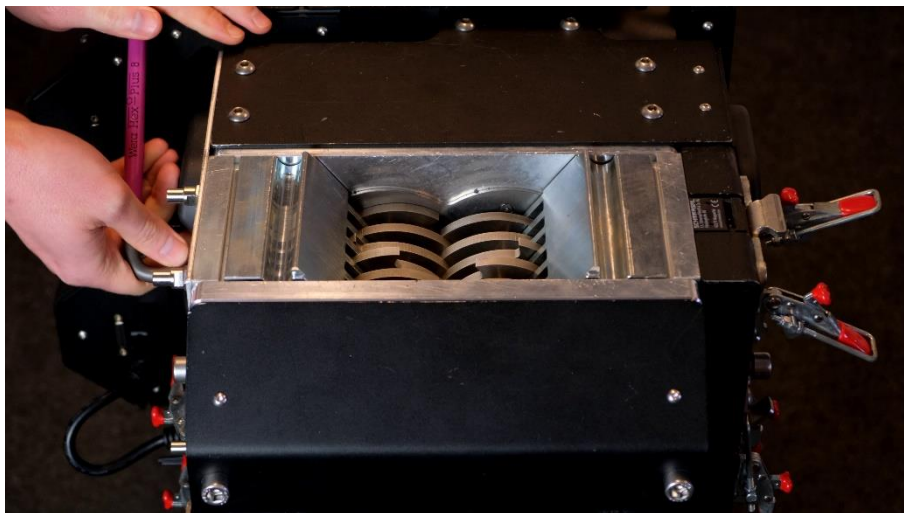
8. Unlock and remove the container. First, empty any granulated material into a clean storage container, if necessary. Then place safely on the side.



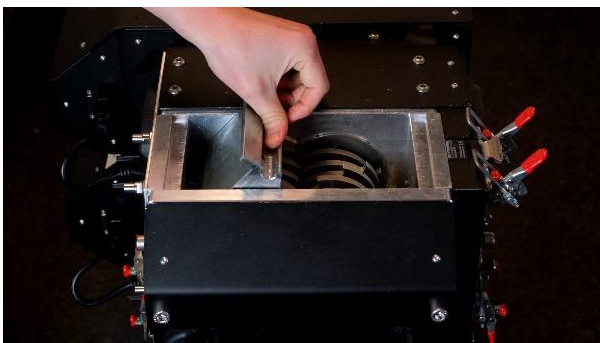
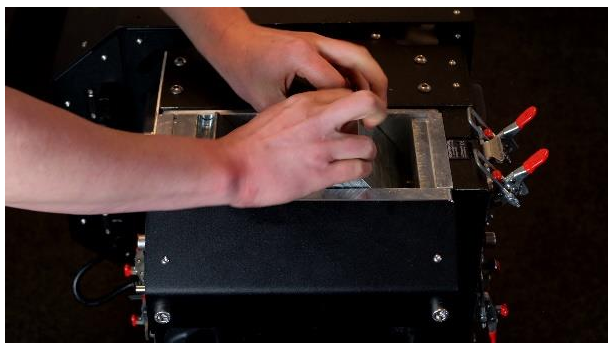
Disassembly

Shredder

9. Loosen shredder combs by partially unscrewing 2 bolts on each side. The bolts only need to be loosened, not removed.

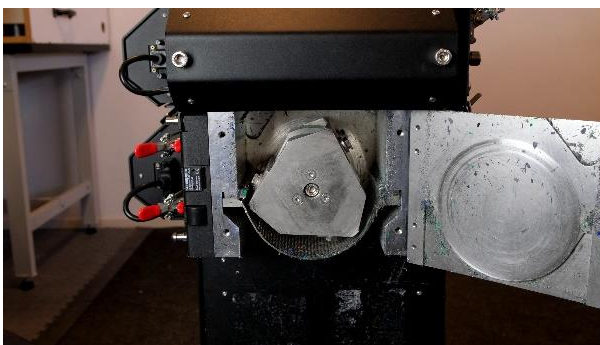
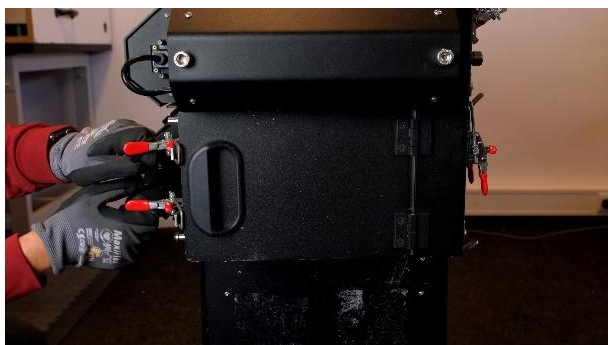


10. Remove shredder combs, and place safely on side.

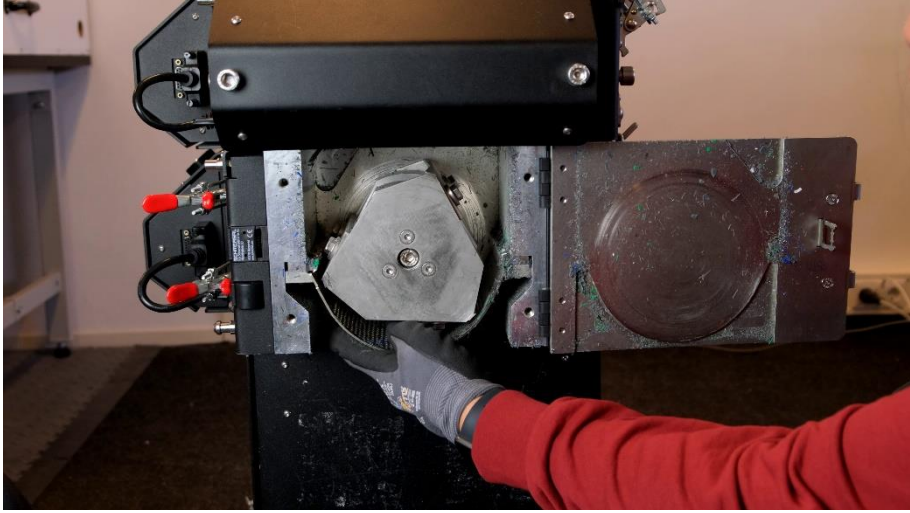


Granulator

11. Unlock door and open.



12. Remove filter screen by sliding it out of the machine, towards you. Place on side.



Cleaning

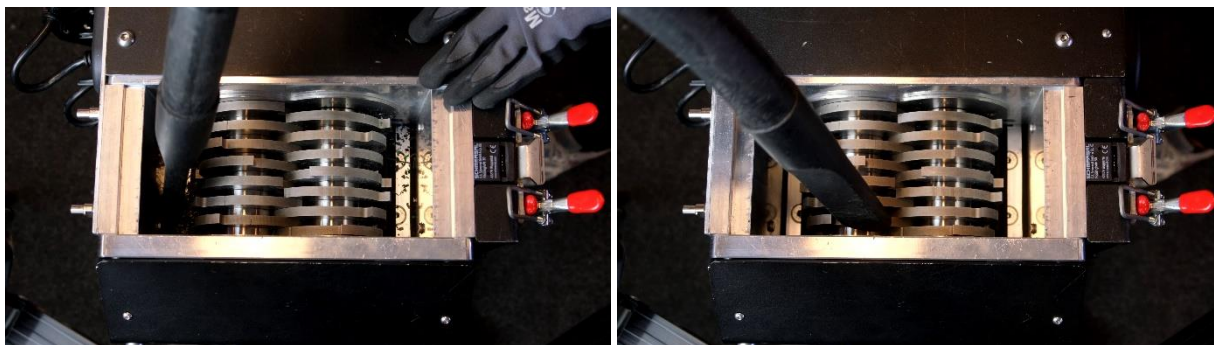
Hopper

13. Place the hopper safely on its edge and vacuum out base thoroughly.

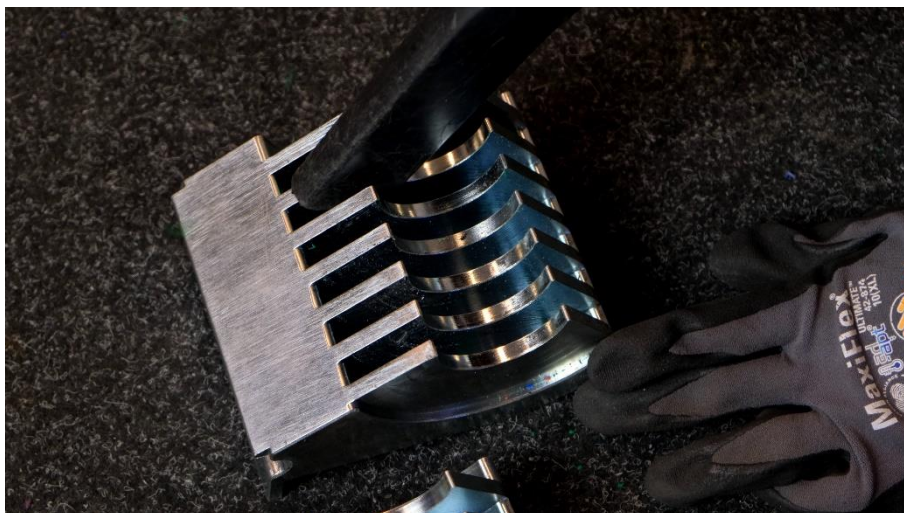


Shredder

14. Vacuum in and around shredder blades, until no visible material remains.



15. Vacuum the shredder combs one by one. If necessary, use a clean brush to get in between the teeth of the combs.

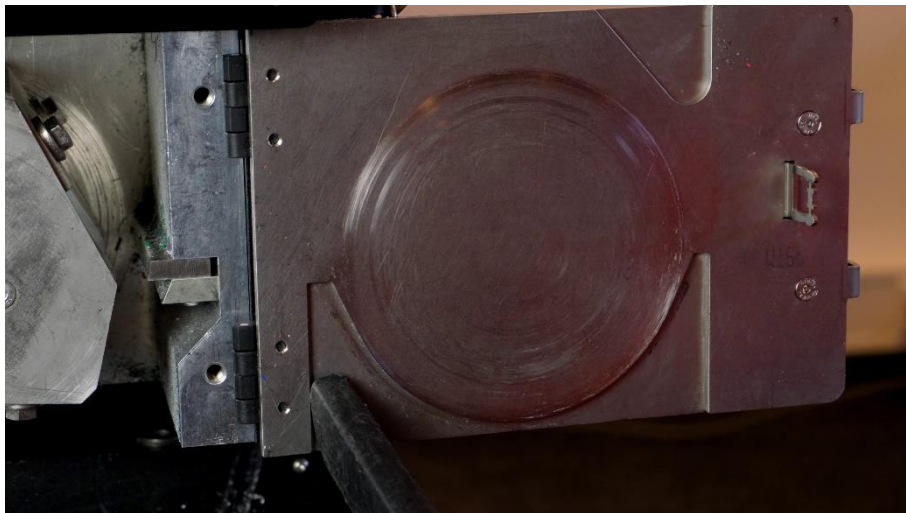


Granulator

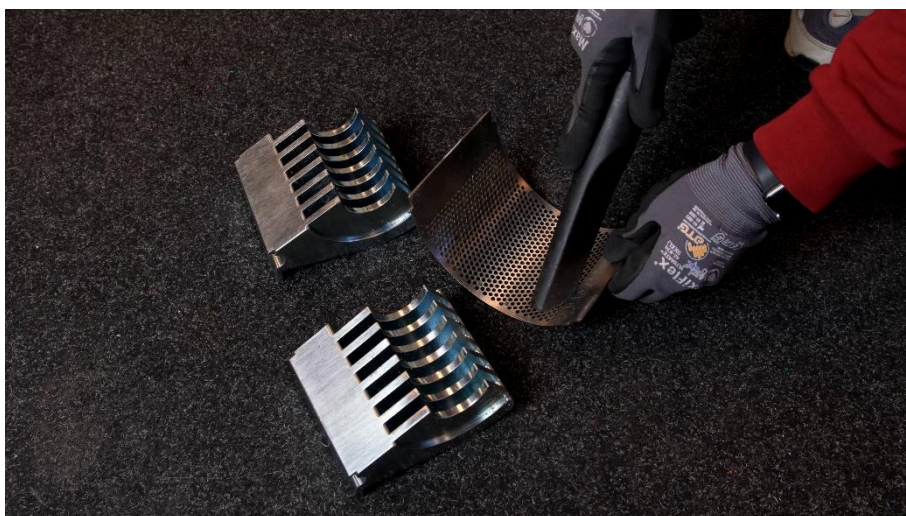
16. Vacuum in and around the rotor knives and the stator knives. Using cut-proof gloves carefully rotate the rotor knives to better access the area.



17. Vacuum or wipe down the granulator door.



18. Vacuum out the filter; or wipe down with microfiber cloth.



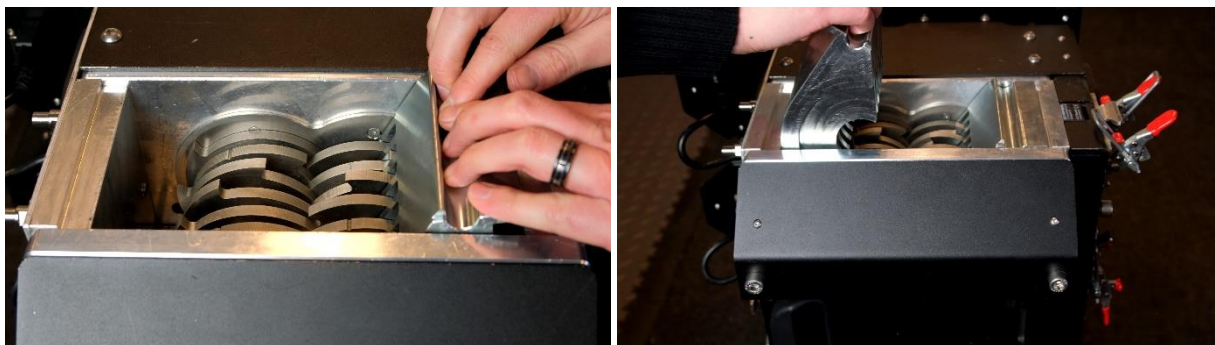
Container

19. Vacuum out container. Take care to access and remove all material from every nook and corner. A clean brush and microfiber cloth can also be used.

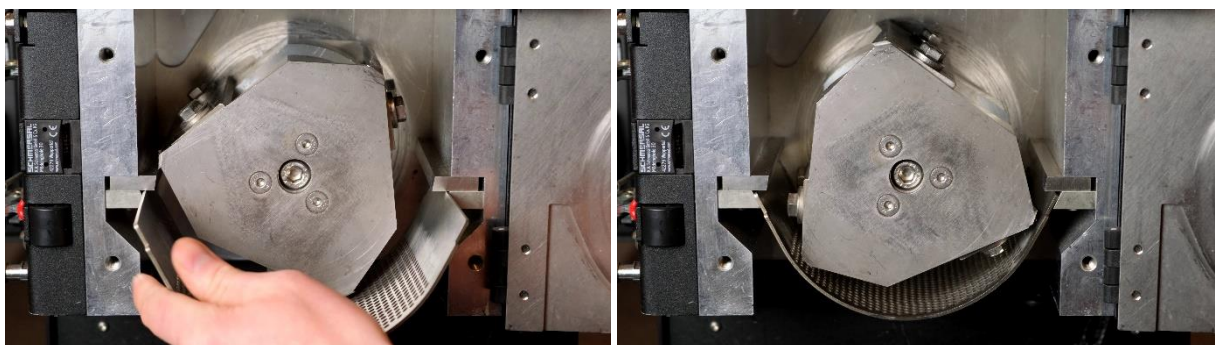


Reassembly

20. Place shredder combs on the two sides of the shredder knives. Tighten 2 side bolts holding each comb in place. Manually check that they are not loose.



21. Insert granulator filter by sliding it into the machine.

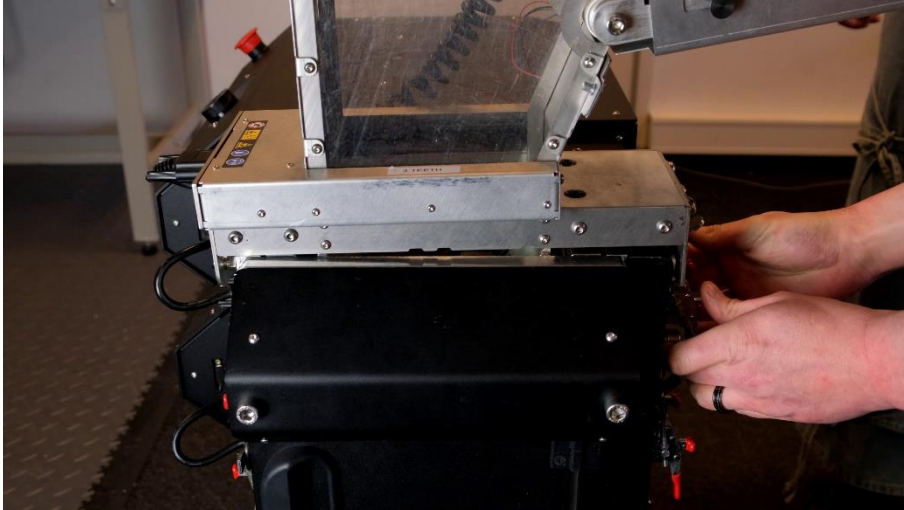


22. Close and secure door.

23. Reattach container and secure.



24. Reattach hopper and secure.



25. Reattach all cables.

